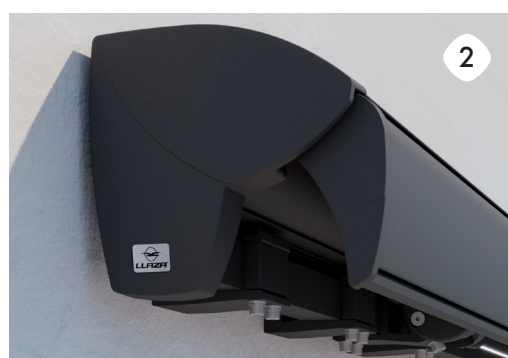
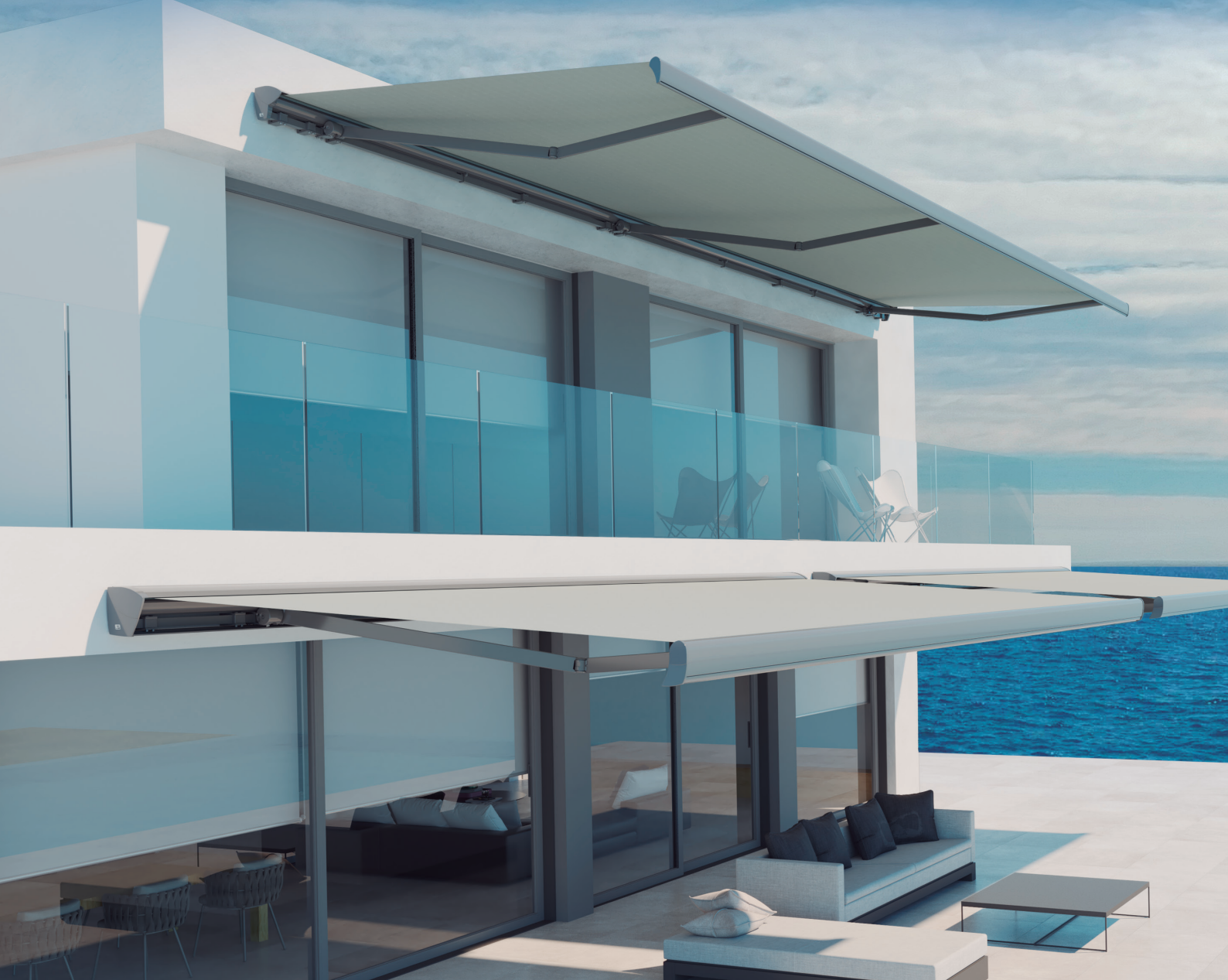


# MODULBOX-400

Progressive solutions



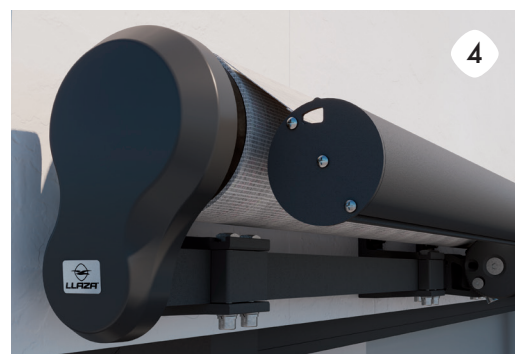


MODULBOX-400 is a range of awnings with a monobloc system designed to achieve maximum dimensions with a compact and attractive configuration.

Using the same basic parts it is possible to achieve progressive solutions:

1. Full Box
2. Semi Box
3. Semi Open
4. Open





In the Open version (4), other additional possibilities are proposed: Manual pitch control, Balcony installation, Crossed arms, Roller tube in frontal position (SCDV).

**Discover all its possibilities**

## ONE SYSTEM ENDLESS BENEFITS

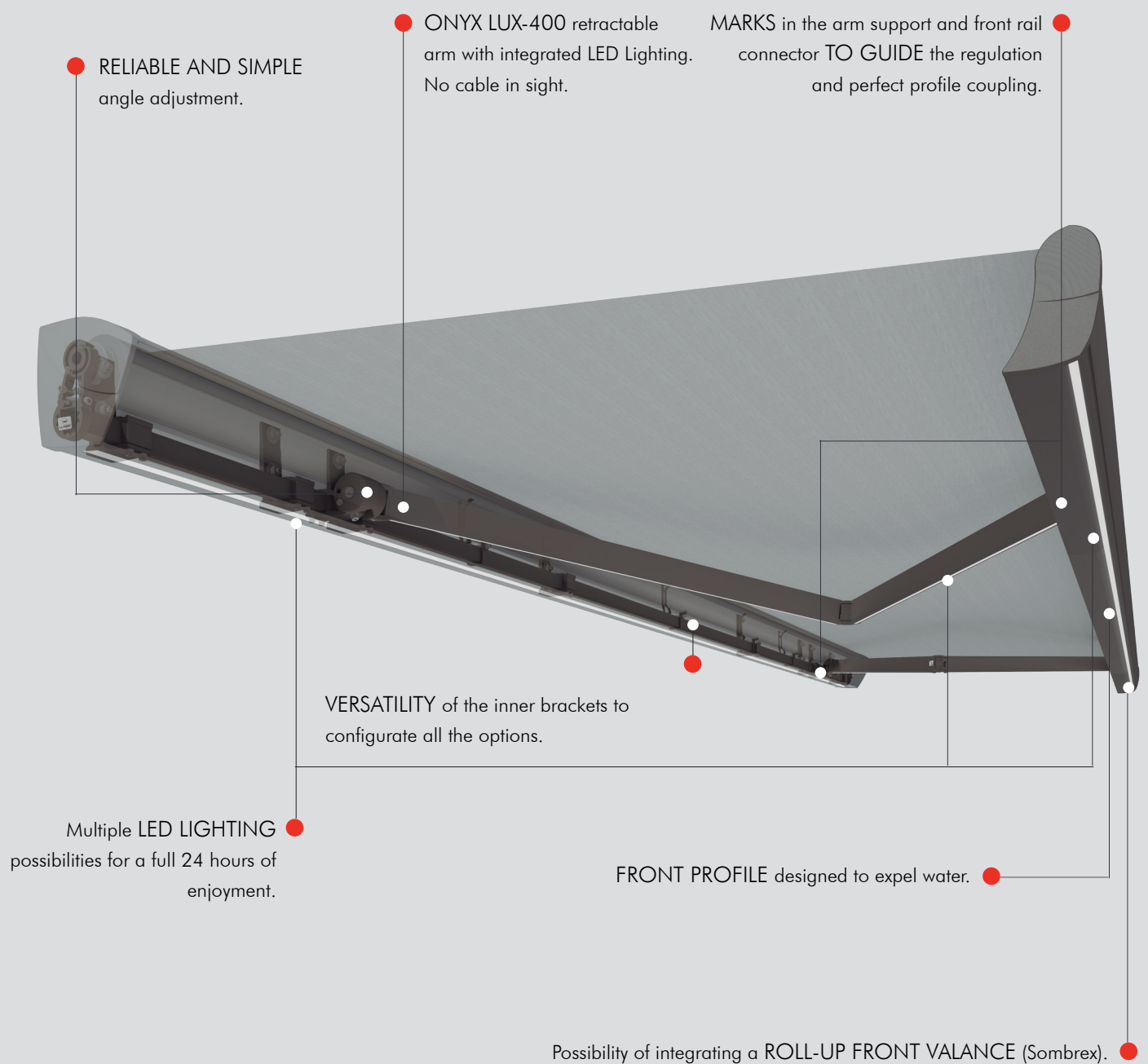
MODULBOX-400 provides great technical and functional advantages. In addition, the quality of its finishes provides it with an extremely refined aesthetic.

### 100% METAL

Its side covers are made entirely from aluminum for greater protection and durability; they are also lacquered in the same color as the rest of the structure, achieving optimal homogeneity.

### 12 x 4

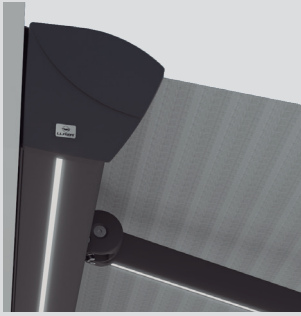
With MODULBOX-400 it is possible to protect large spaces thanks to a projection capacity of up to 4 meters and width of up to 12 meters with 4 arms.







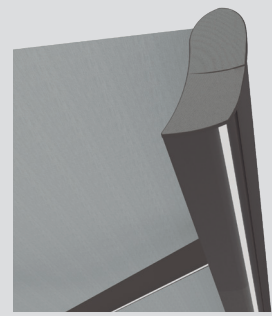
## LED FULL EQUIPE



Box profile



Onyx Lux-400



Front profile



## ASSISTED REGULATION



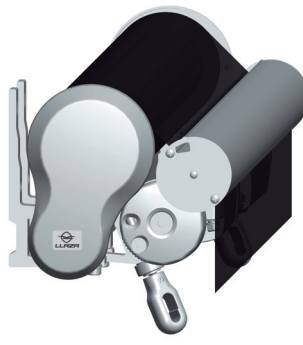
The angle adjustment is carried out in just few steps and it also guarantees a perfect closure in the Full Box and Semi Box options. A system of marks guides the position of the arm supports and the front rail connectors.



## PITCH CONTROL AND CROSSED ARMS



CROSSED ARMS



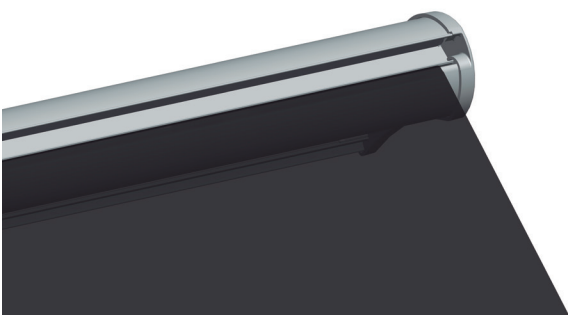
PITCH CONTROL

Crossed arms: to achieve larger projections in more reduced widths regarding the general minimum widths of the awning.

Pitch control functionality: to modify the angle of the awning to meet the needs of any time of day



## WATER DRAINAGE



In case of use with light rain the front profile is designed to expel water.

## A SINGLE SYSTEM FOR A WIDE RANGE OF SOLUTIONS

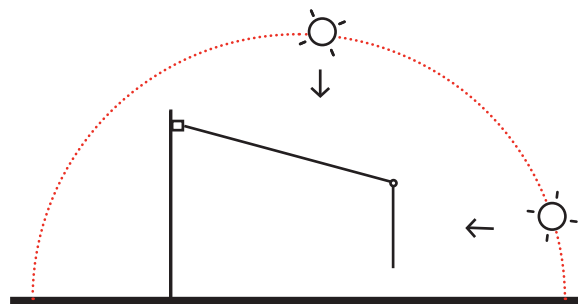
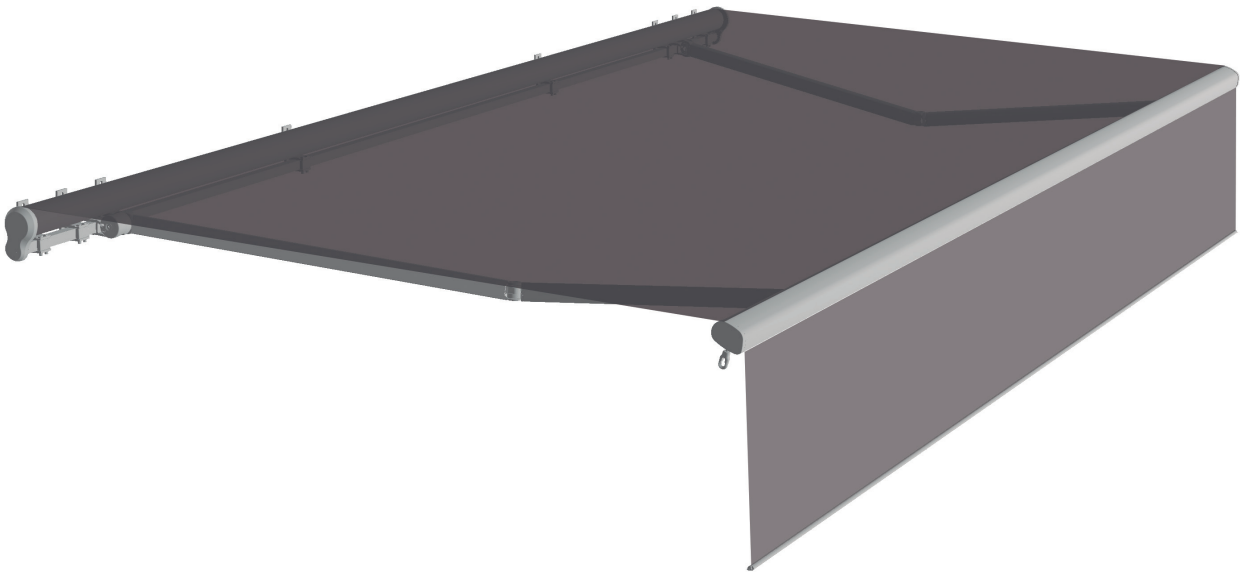


### EASE AND VERSATILITY

The same installation and profile attachment brackets are used for the different versions of the MODULBOX-400. This adds significant value to the product, both at a technical level for assembly and for optimising the stock of necessary parts.



## THE MOST COMPLETE SYSTEM WITH A **FULL SHADOW**



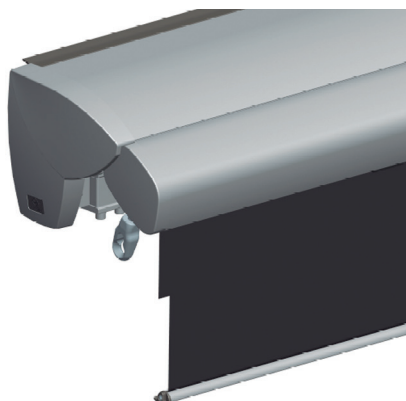
The MODULBOX-400 system makes it possible to incorporate the SOMBREX (roll-up valance) in all configuration options. This roll-up valance optimises the performance of the product as it provides greater sun protection even when the sun's position is low on the horizon.

Another advantage of incorporating a SOMBREX is the achievement of greater privacy to enjoy the outdoor space more completely.

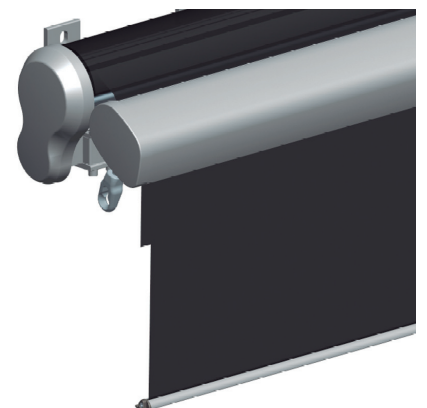
### APPLICATION EXAMPLES



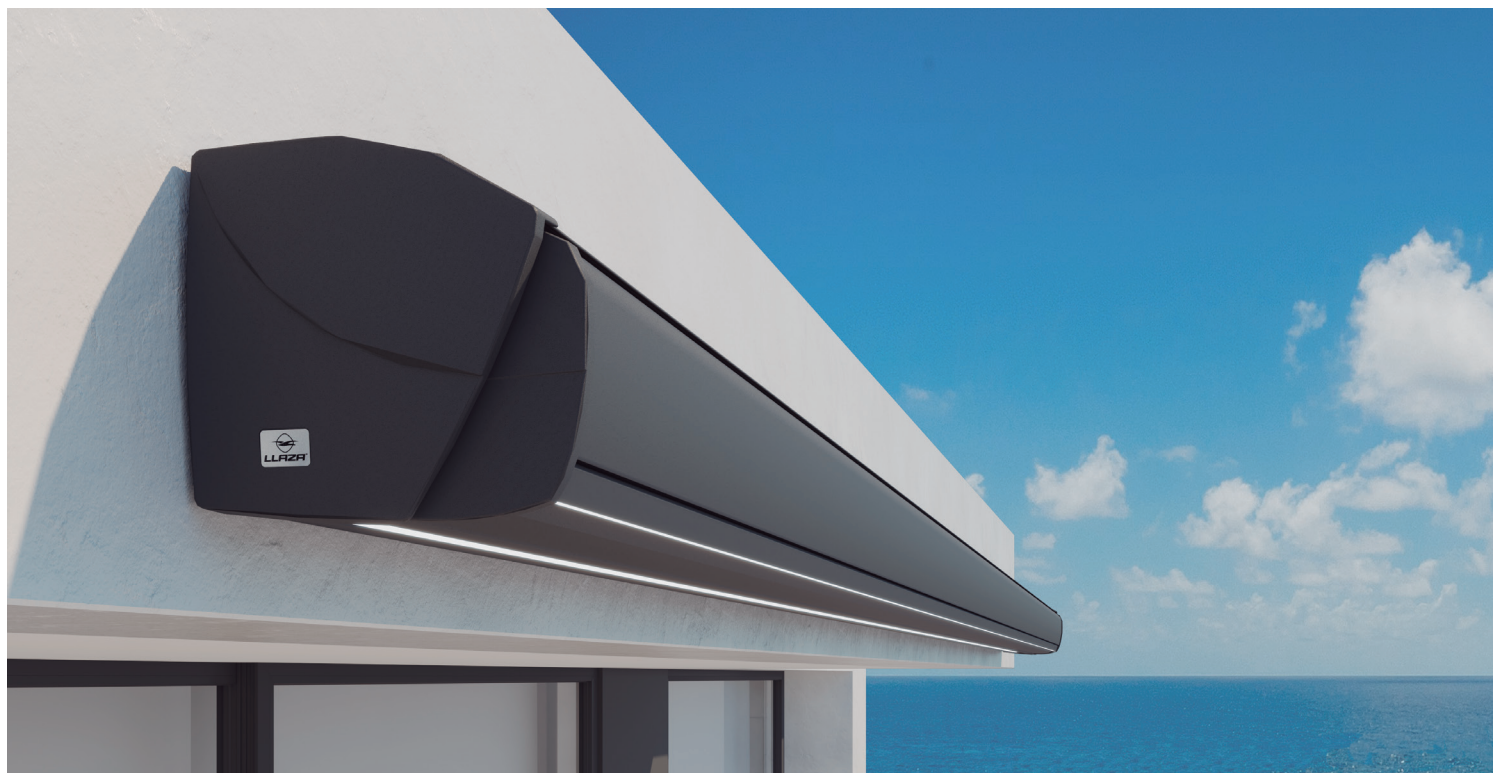
MODULBOX-400 FULL BOX



MODULBOX-400 SEMI BOX

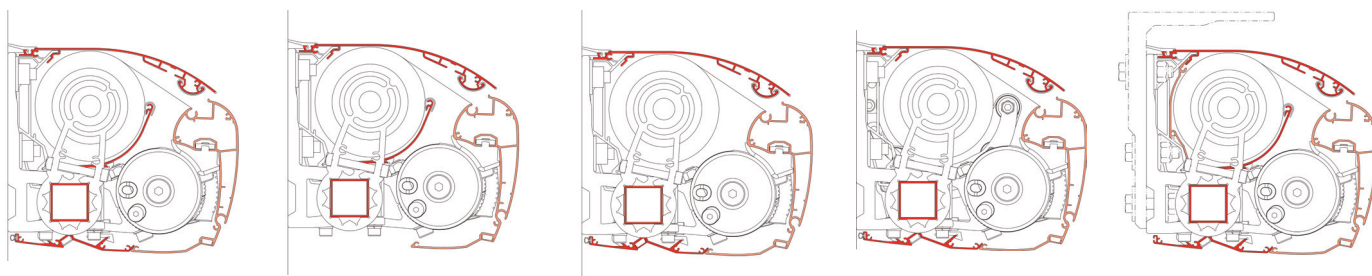


MODULBOX-400 OPEN



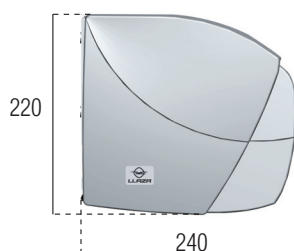
## MODULBOX-400 FULL BOX

### Different possibilities

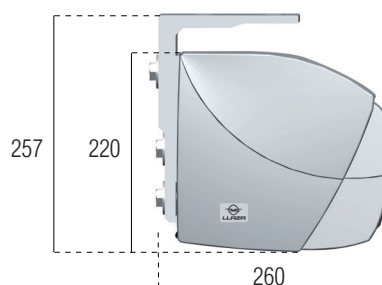


### Dimensions (mm)

Wall mounting



Ceiling mounting



- This model achieves the full performance required of an awning.

- Full protection as the arms and the fabric keep sheltered inside the box.

### Lighting possibilities

- ☒ Box profile
- ☒ Front profile
- ☒ Arms (Onyx Lux)

### Operation

#### MODULBOX-400 FULL BOX

- ☐ Manual
- ☒ Motorised
- ☒ Automated

#### SOMBREX

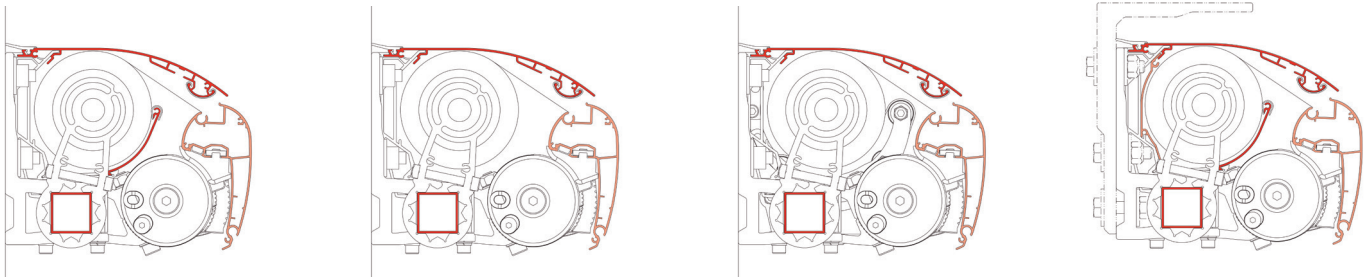
- ☒ Manual
- ☒ Motorised





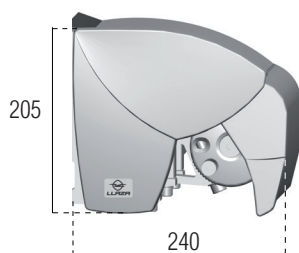
## MODULBOX-400 SEMI BOX

### Different possibilities

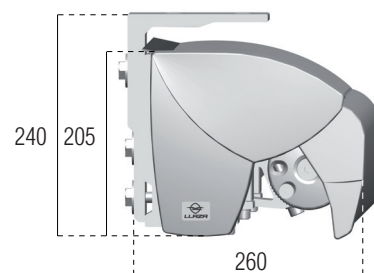


### Dimensions (mm)

Wall mounting



Ceiling mounting



- The Semi Box configuration achieves complete protection of the fabric and the front part of the awning thanks to the perfect coupling of the profiles when the awning is fully retracted.

### Lighting possibilities

- ☐ Box profile
- ☒ Front profile
- ☒ Arms (Onyx Lux)

### Operation

#### MODULBOX-400 SEMI BOX

- ☒ Manual
- ☒ Motorised
- ☒ Automated

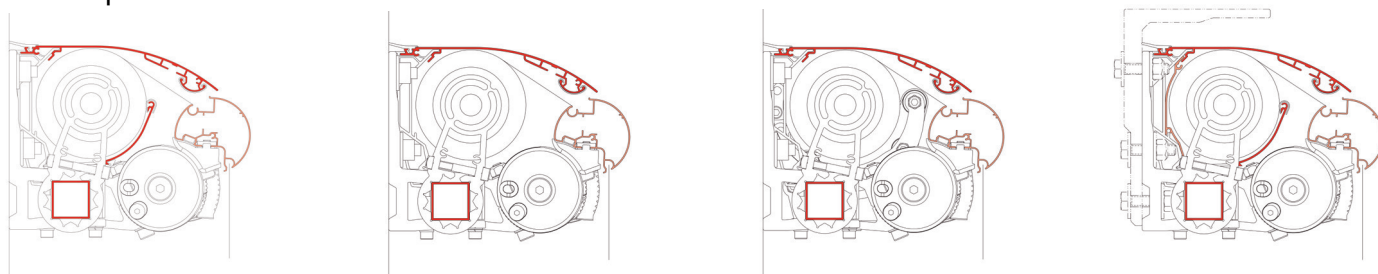
#### SOMBREX

- ☒ Manual
- ☒ Motorised

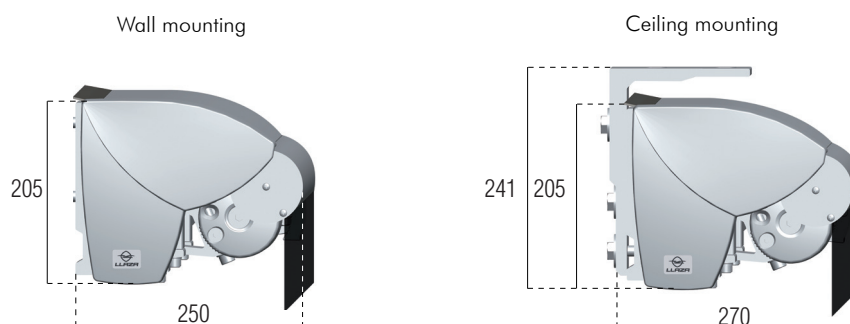


## MODULBOX-400 SEMI OPEN

### Different possibilities



### Dimensions (mm)



- The Semi Open model provides high protection of the fabric, the supports and also the arms as they are kept protected by the top profile and the side covers.

- The round shape of the front profile opens the Modulbox model to more aesthetic possibilities while maintaining its strength and resistance.

### Lighting possibilities

- ☐ Box profile
- ☒ Front profile
- ☒ Arms (Onyx Lux)

### Operation

#### MODULBOX-400 SEMI OPEN

- ☒ Manual
- ☒ Motorised
- ☒ Automated

#### SOMBREX

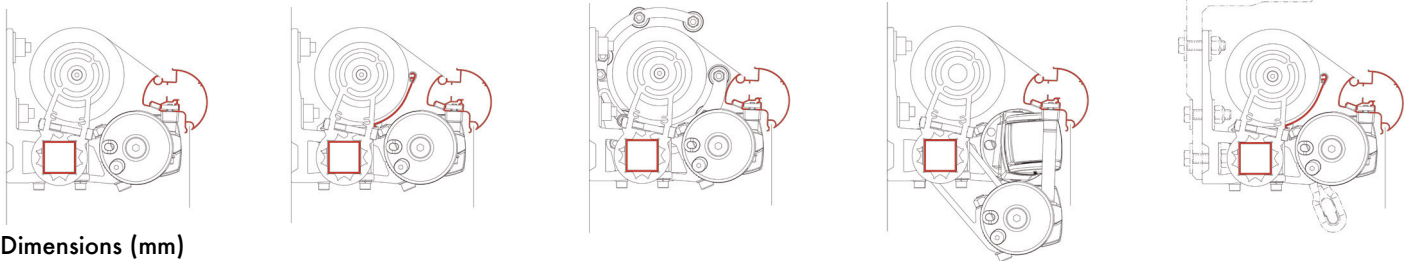
- ☒ Manual
- ☒ Motorised





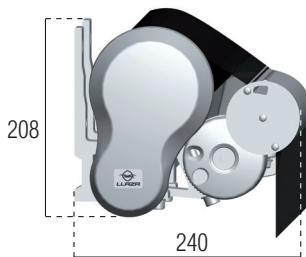
## MODULBOX-400 OPEN

### Different possibilities

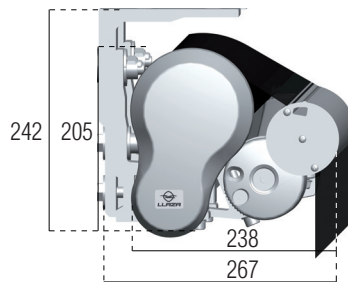


### Dimensions (mm)

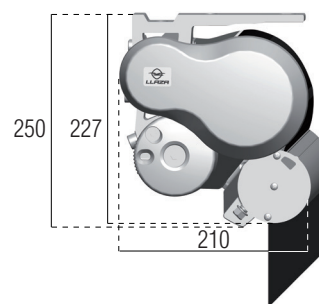
Wall mounting



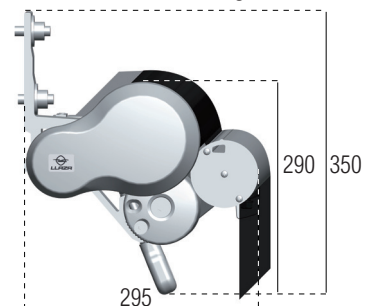
Ceiling mounting



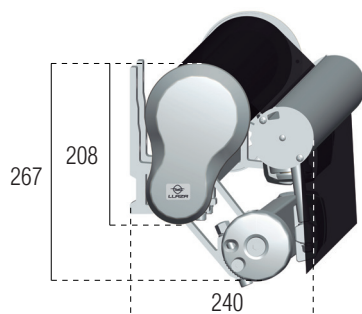
Balcony mounting



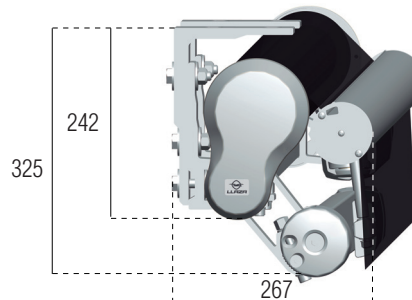
SCDV mounting



Wall mounting crossed arms



Ceiling mounting crossed arms



- This model offers a wide range of configurations to adapt to the needs of each installation: front, ceiling, balcony, Scandinavian style and crossed arms.
- Possibility of pitch control functionality to modify the angle of the awning depending on the sun's position throughout the day.

### Lighting possibilities

- ☐ Box profile
- ☒ Front profile
- ☒ Arms (Onyx Lux)

### Operation

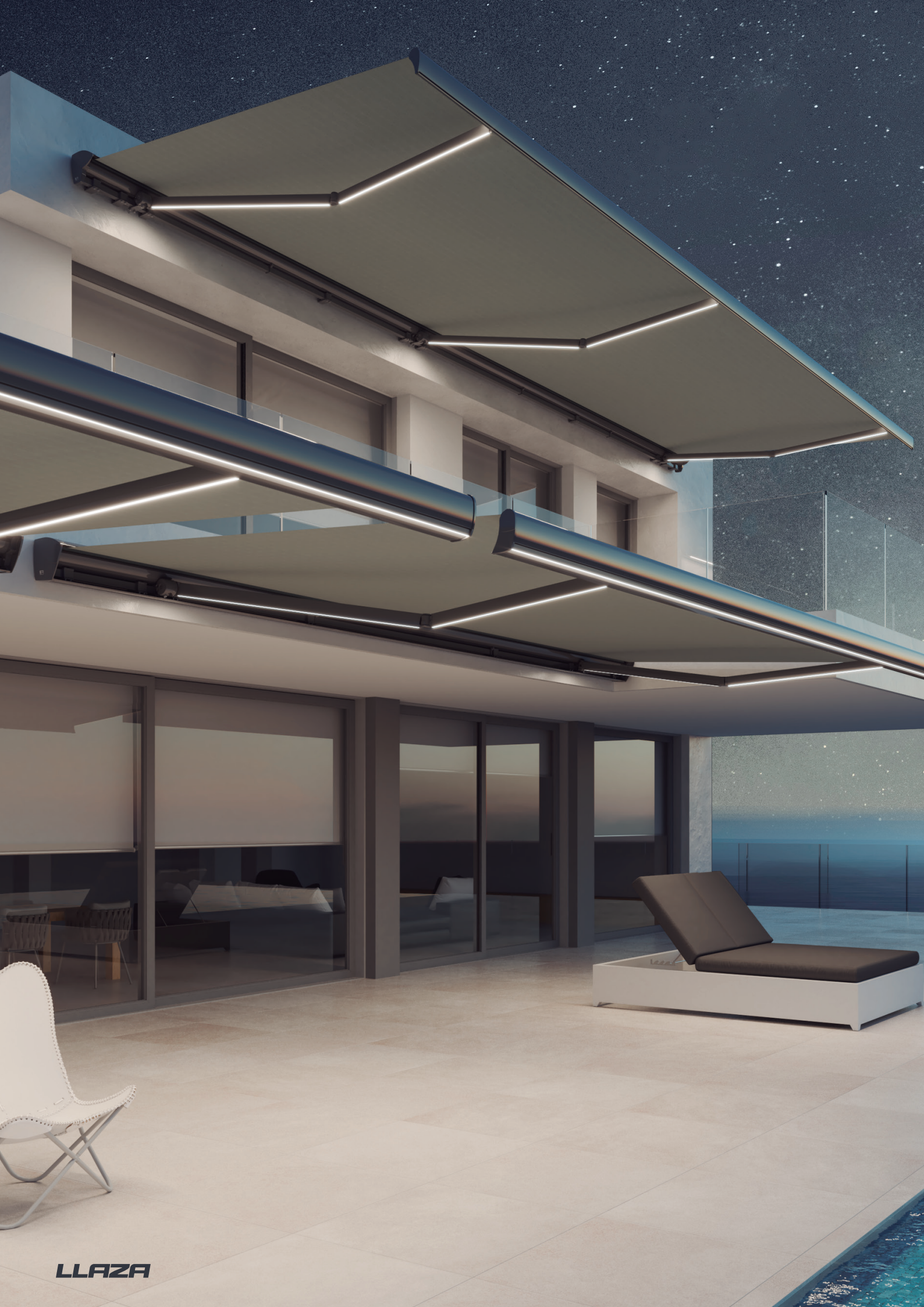
#### MODULBOX-400 OPEN

- ☒ Manual
- ☒ Motorised
- ☒ Automated

#### SOMBREX

- ☒ Manual
- ☒ Motorised



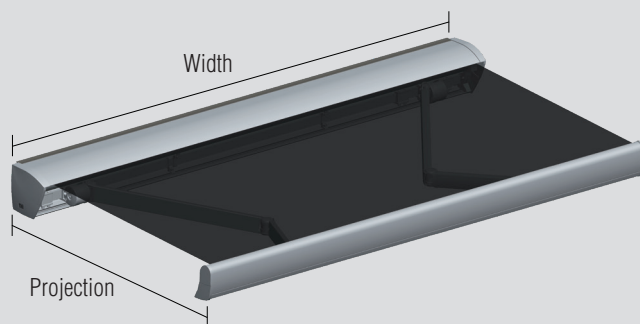


**LLAZA**



## Basic technical specifications

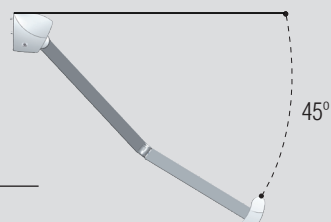
### Maximum dimensions (m)



No. of arms	Maximum width	Max. projection
2	6,00	4,00
3	9,00	4,00
4	12,00	4,00

### Angle

Front  
Ceiling



Wall, Ceiling and Scandinavian

OPEN STD crossed arms

OPEN Balcony

0° - 45°

0° - 30°

45° - 85°

### Usual installations

Terraces



Large terraces



HORECA



### Mounting



Frontal



Ceiling

### Classification



Wind  
Up to 28 km/h



Durability  
10,000 maneuvers min.

### Finishes

Lacquer in accordance with QUALICOAT standards  
Stainless steel screws and bolts  
Arms with integral laquering

### Max. dimensions for recommended fabrics (m)

### Recommended arms



ONYX-400  
ONYX LUX-400

FULL BOX - SEMI BOX - SEMI OPEN - OPEN					OPEN
Width x Projection (m)	2 arms	3 arms	4 arms	2 Crossed arms	
RECARRIL	RECACRIL	6,00 x 4,00	9,00 x 4,00	12,00 x 4,00	4,00 x 4,00
	RECSYSTEM	6,00 x 4,00	9,00 x 4,00	12,00 x 4,00	4,00 x 4,00
	RECWATER	5,00 x 3,00	7,50 x 3,00	10,00 x 3,00	3,00 x 3,00
RECSREEN	RecScreen 4000P - 1%	6,00 x 3,50	9,00 x 3,50	12,00 x 3,50	3,50 x 3,50
	RecScreen 6000 - 2%	5,00 x 3,00	7,50 x 3,00	10,00 x 3,00	3,00 x 3,00
	RecScreen 7000 - 3%	6,00 x 3,50	9,00 x 3,50	12,00 x 3,50	3,50 x 3,50
	RecScreen RAINLESS	5,00 x 3,00	7,50 x 3,00	10,00 x 3,00	3,00 x 3,00
PVC	RECAFLEX PRO	5,25 x 3,00	7,50 x 3,00	10,50 x 3,00	3,00 x 3,00



&

RECASENS  
BCN 1886

HABITAT LLAZA adds the strength of two major brands to obtain sun protection with all the guarantees of functionality and quality. A wide selection of fabrics is made available to professionals that allows them to find the right services for every need.



High-performance fabric manufactured from solution-dyed acrylic fibre. Finished with the special water- and dirt-repelling "Infinity" treatment for awnings that forms a stain-proof, mildew-proof barrier while allowing the canvas to breathe. Available in a wide range of colours.

*Recsystem®*

High-performance fabric manufactured from solution-dyed acrylic fibre, semi-waterproof with a fusible resin coating on one side, with capacity to withstand water columns of over 800 mm. Finished with the special water- and dirt-repelling "Infinity" treatment for awnings that forms a stain-proof, mildew-proof barrier while allowing the canvas to breathe.

*Recwater*

Translucent waterproof fabric manufactured from solution-dyed acrylic fibre with satin-finish engraved PVC underside coloured to match the acrylic, 50% solution-dyed acrylic fibre and 50% PVC. Finished with the special water- and dirt-repelling "Infinity" treatment for awnings that forms a stain-proof, mildew-proof barrier.



RecScreen

From the range of polyester thread screen fabric, RecScreen 4000P, RecScreen 6000 and RecScreen 7000 with openness factor of 1%, 2% and 3% respectively. These models provide reinforced thermal comfort, glare control and privacy while also offering good outward visibility and good use of natural light.



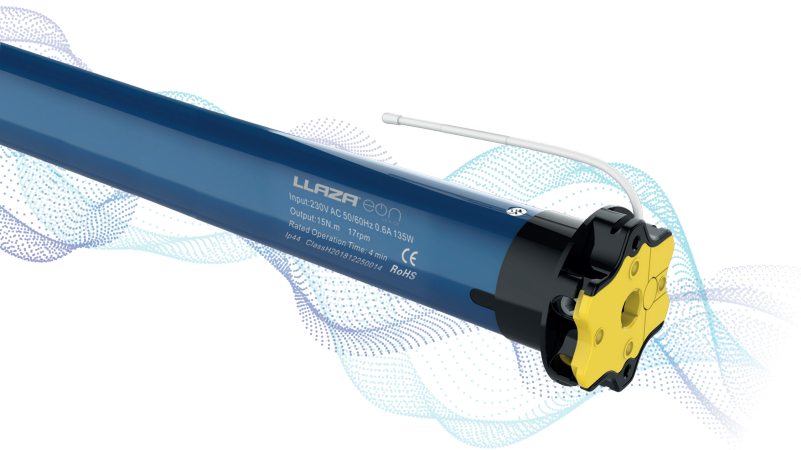
RecScreen®  
RAINLESS

Polyester thread screen base with a basket-weave structure and PVC coated side, 20% PES HT and 80% PVC. This property simultaneously provides total waterproofing, good use of natural light, thermal comfort and textile appearance.

RECAFLEX PRO

HT polyester 1100 dtex composite fabric with PVC coating that is waterproof reversible translucent with smooth gloss lacquer finish double-sided.





## EON, the intelligent motorisation by LLAZA. Control and automation, to connect us to our way of life.

### Bidirection technology

The bidirectional Technology of the Eon motors allows for a total control and maximum efficiency of solar protection installations.

Users have real-time information on the state of opening or closing in which the awnings are, both in the smathphone and in the LLAZA EON exclusive remote control.



### Ingegrated WIFI connection

Advanced technology that connects the awnings directly to WIFI. Through platforms such as Smartlife and Tuya we can control the awnings together with other home devices: blinds, alarms, lighting, etc.



Awnings



Smartphone  
control



LED



Voice assistant



Radio Signal

The LLAZA control and automation family is designed to bring intelligent connectivity to all our installations.



mk@llaza.com  
export@llaza.com  
T. +34 977 990 600  
F. +34 977 990 610

[www.llaza.com](http://www.llaza.com)

LLAZA WORLD, S.A.  
Tramuntana, 1  
Pol Ind. Roques Roges  
43460 ALCOVER — Spain